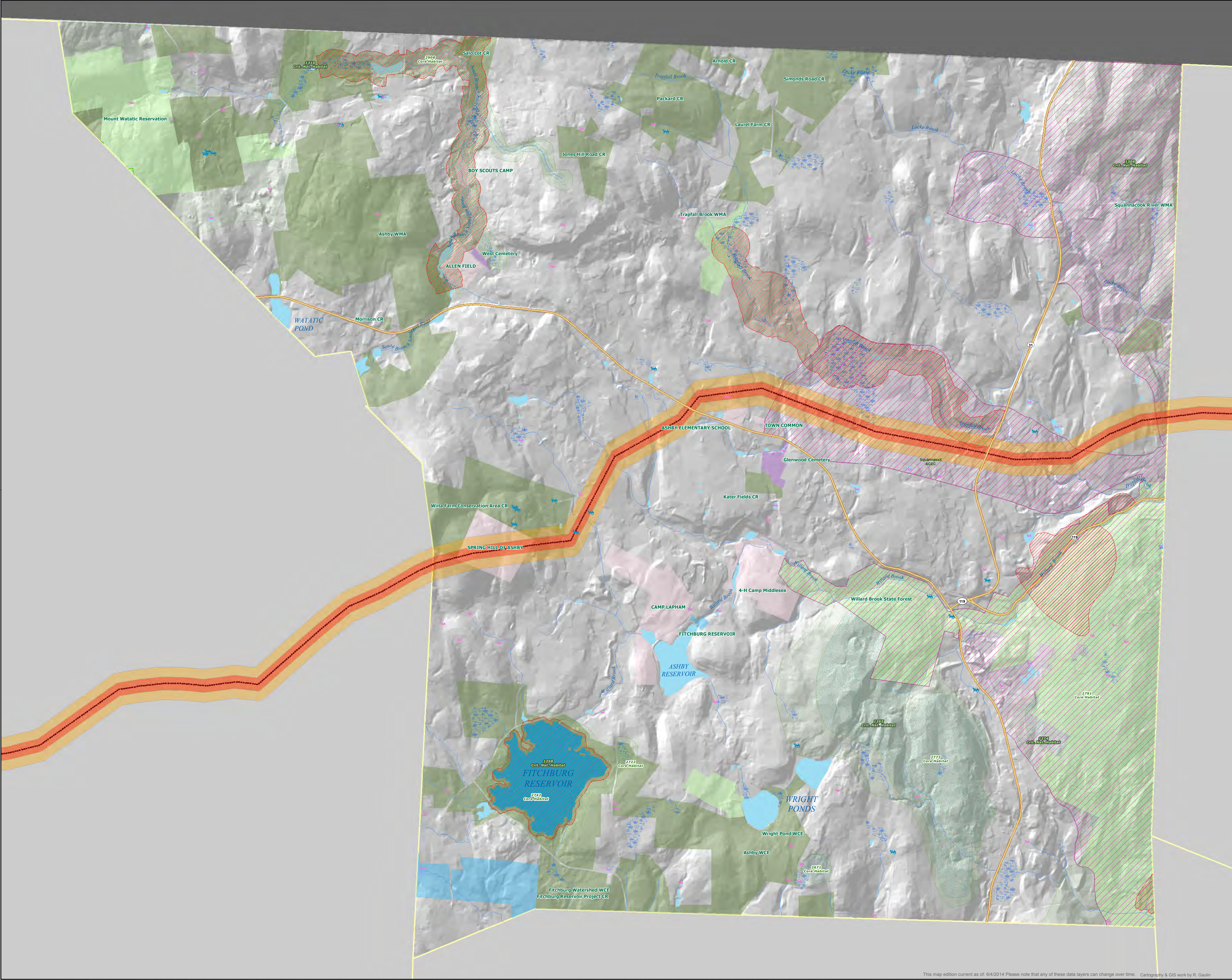


Natural Resources Potentially Affected by TGP/Kinder Morgan Gas Pipeline in ASHBY, Mass.



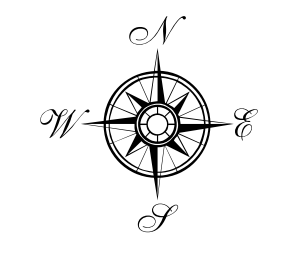
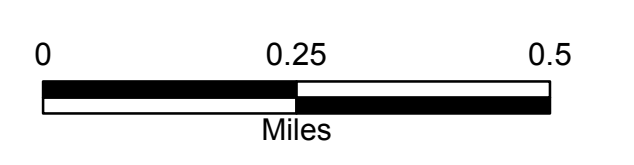
- Legend**
- ✦ NHESP Potential Vernal Pools
 - ✦ NHESP Certified Vernal Pools
 - Approx. KM/TGP Pipeline Route*
 - Pipeline +/- 200 ft.
 - Pipeline +/- 500 ft.
 - NHESP Natural Communities
 - Area of Critical Environmental Concern
 - NHESP Priority Habitats of Rare Species
 - NHESP Estimated Habitats of Rare Wildlife
 - Open Space by Primary Purpose**
 - Agriculture
 - Conservation
 - Recreation
 - Recreation and Conservation
 - Flood Control
 - Habitat Protection
 - Historical / Cultural
 - Scenic (Official Designation Only)
 - Underwater Site
 - Water Supply Protection
 - Other
 - Unknown
 - BioMap2 Core Habitat
 - BioMap2 Critical Natural Landscape

DISCLAIMER: The accuracy of the pipeline depicted on this map cannot be established without better data from Kinder Morgan.

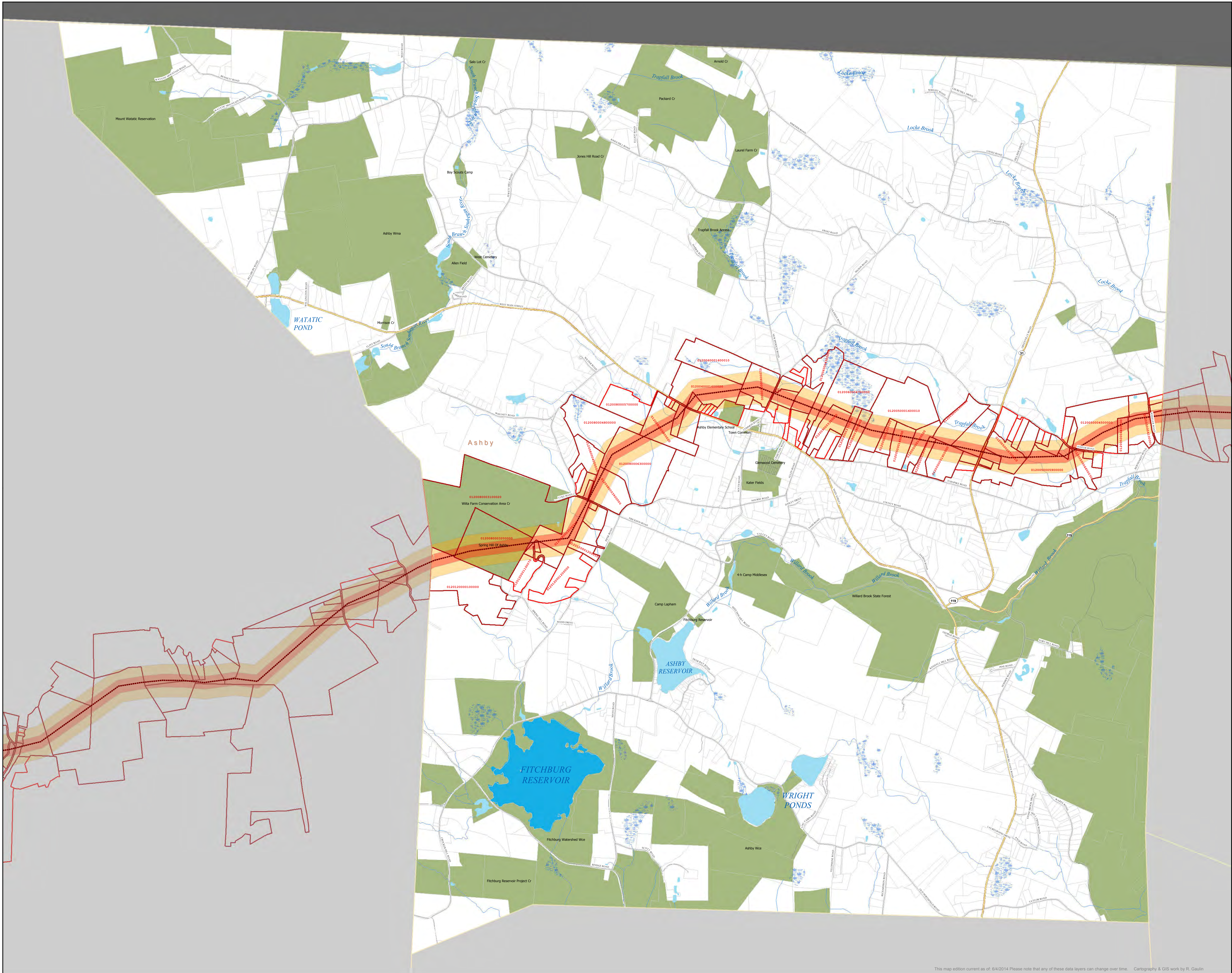
Data Sources:
 *Pipeline path and derived swaths: Kinder Morgan County-Scale maps marked "Preliminary Use Only", as made public by various municipalities. PDF images were converted to GIS file formats.
 Other data layers: Commonwealth of Massachusetts (MassGIS) as developed by various agencies and municipalities. NHESP = The Natural Heritage & Endangered Species Program.

Detailed descriptions of most of the data layers included on this map are available online at:
<http://www.mass.gov/inf/research-and-tech/it-serv-and-support/application-serv/office-of-geographic-information-massgis/datalayers/layerlist.html>

1:12,000



Parcels Potentially Affected by TGP/Kinder Morgan Gas Pipeline in ASHBY, Mass,



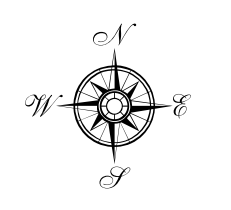
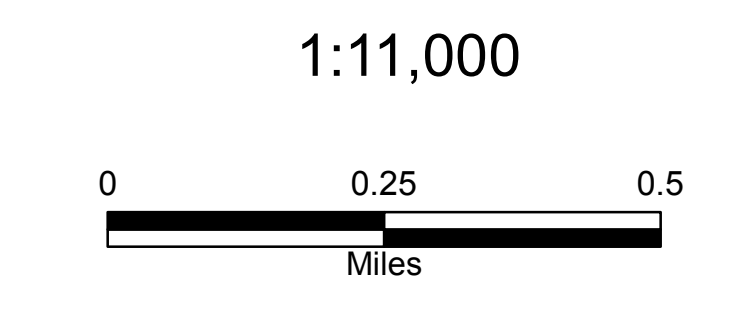
- Legend**
- Approx. KM/TGP Pipeline Route*
 - Crossed by pipeline +/- 200 ft.
 - Crossed by pipeline +/- 500 ft.
 - Pipeline +/- 200 ft.
 - Pipeline +/- 500 ft.
- Railroads - Type of Service**
- Active Rail Service
 - Right-of-way used for Hiking and Biking
 - Abandoned Service ROW in Public Interest
 - Abandoned or Out of Service
 - Unknown
 - Merrimack_River_Poly
 - Open Space

DISCLAIMER: The accuracy of the pipeline depicted on this map cannot be established without better data from Kinder Morgan. Note also that route variations from this line have been made public for several towns and for "lateral" pipelines, and which will be included in future revisions of this map series.

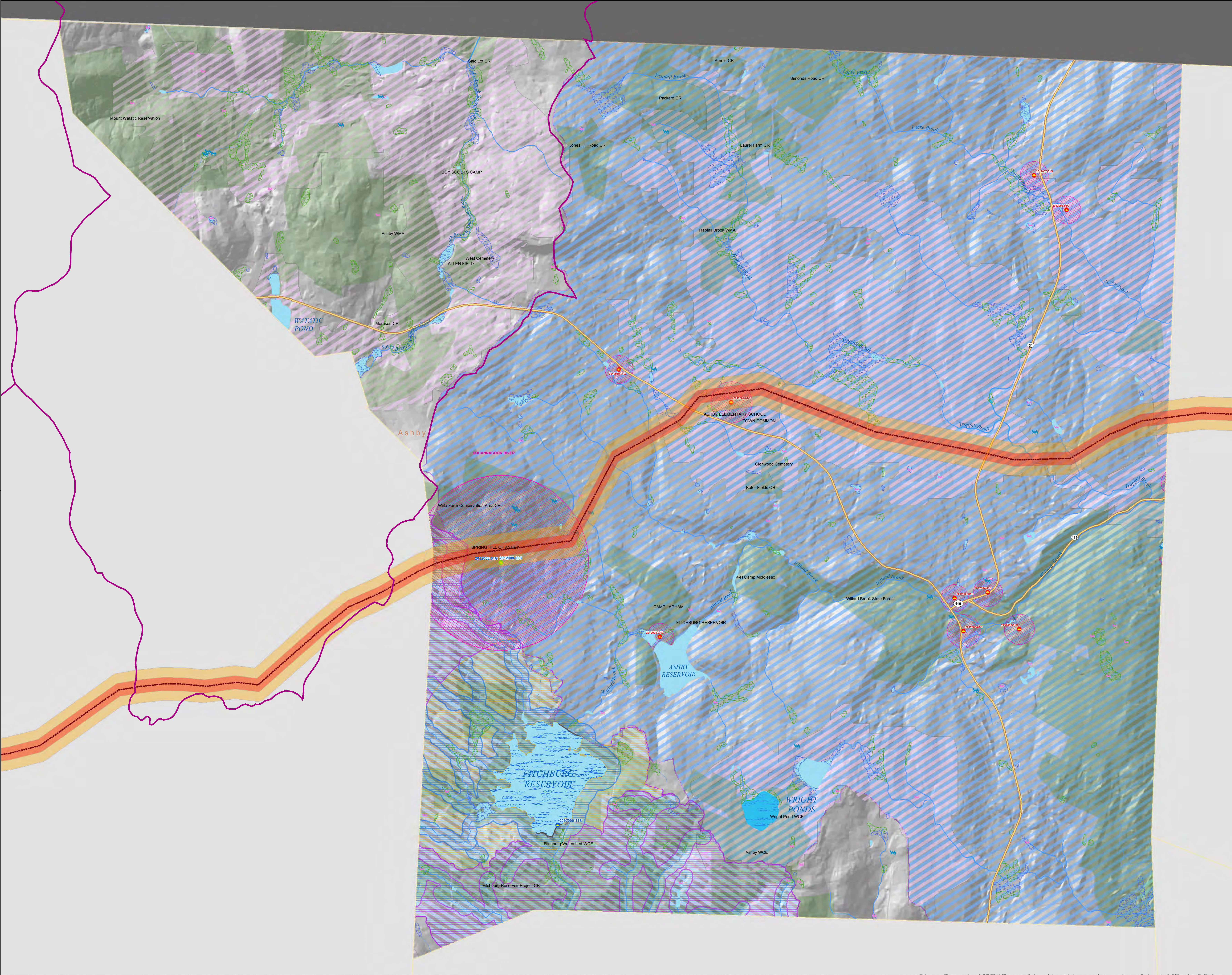
Data Sources:
 Pipeline path and derived swaths: Kinder Morgan County-Scale maps marked "Preliminary Use Only", as made public by various municipalities. PDF images were converted to GIS file formats.
 Other data layers: Commonwealth of Massachusetts (MassGIS) as developed by various agencies and municipalities.

Parcels labeled with Assessor's map & lot number.

Detailed descriptions of most of the data layers included on this map are available online at: <http://www.mass.gov/nr/research-and-tech/it-services-and-support/application-services/office-of-geographic-information-massgis/datasources/layered.html>



Water Resources Potentially Affected by TGP/Kinder Morgan Gas Pipeline in ASHBY, Mass.



- Legend**
- Major Watersheds
 - Fishing/Boating Access Site
 - Public Water Supplies**
 - Community Groundwater Source
 - Surface Water Intake
 - Emergency Surface Water Intake
 - Non-Community Groundwater Source
 - Potential Vernal Pools
 - Certified Vernal Pools
 - Existing Gas & Electric Transmission Lines
 - Approx. KM/TGP Pipeline Route*
 - Pipeline +/- 200 ft.
 - Pipeline +/- 500 ft.
 - Marsh
 - Wooded Swamp
 - Perennial Stream
 - Intermittent Stream
 - Ditch/Canal
 - Aqueduct
 - Dam
 - Pond, Lake, Ocean
 - Drinking Water Reservoir
 - Inundated Area
 - High Yield Aquifer
 - Medium Yield Aquifer
 - Interim Wellhead Protection Area (IWPA)
 - Approved Wellhead Protection Area (Zone II)
 - Surface Water Supply Protection**
 - Zone A
 - Zone B
 - Zone C
 - Living Waters Core Habitat
 - Living Waters Critical Supporting Watershed
 - High Yield Aquifer
 - Medium Yield Aquifer
 - Outstanding Resource Waters (2007)**
 - Public Water Supply Watershed
 - Area of Critical Environmental Concern
 - Scenic/Protected River
 - Wildlife Refuge
 - Protected Open Space

Data Sources:
*Pipeline path and derived swaths: Kinder Morgan County-Scale maps marked "Preliminary Use Only", as made public by various municipalities. PDF images were converted to GIS file formats.
Other data layers: Commonwealth of Massachusetts (MassGIS) as developed by various agencies and municipalities.
Detailed descriptions of most of the data layers included on this map are available online at:
<http://www.mass.gov/infreresearch-and-tech/serv-and-support/application-serv/office-of-geographic-information-massgis/datalayers/layerlist.html>

DISCLAIMER: The accuracy of the pipeline depicted on this map cannot be established without better data from Kinder Morgan.

